

Finding Our Location: Orienting Ourselves Toward Holy Imagination

Rev. Dr. Kimberly Wagner
Assistant Professor of Preaching
Princeton Theological Seminary

Content Warning and Invitation to Self-Care



Inclinations of Communities Experiencing Trauma

Return to Past (Imagined or Real)

Repair Quickly and “Move On”

Inclinations of Communities Experiencing Trauma

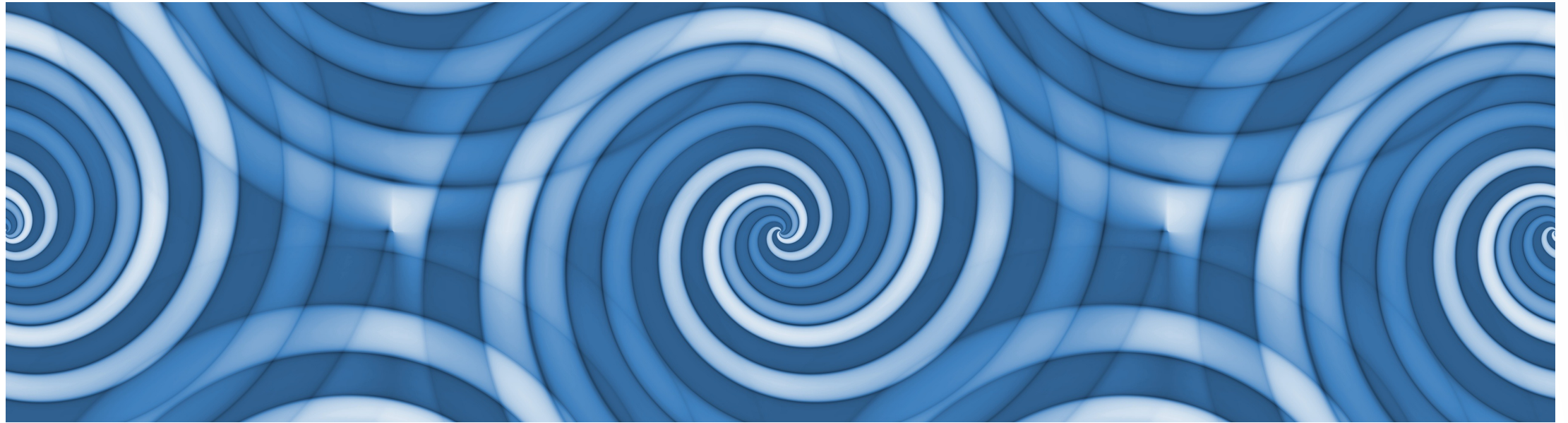
Return to Past (Imagined or Real)

Repair Quickly and “Move On”

Eliminate Traumatic Impact

Problems with “Eliminating Traumatic Impact”



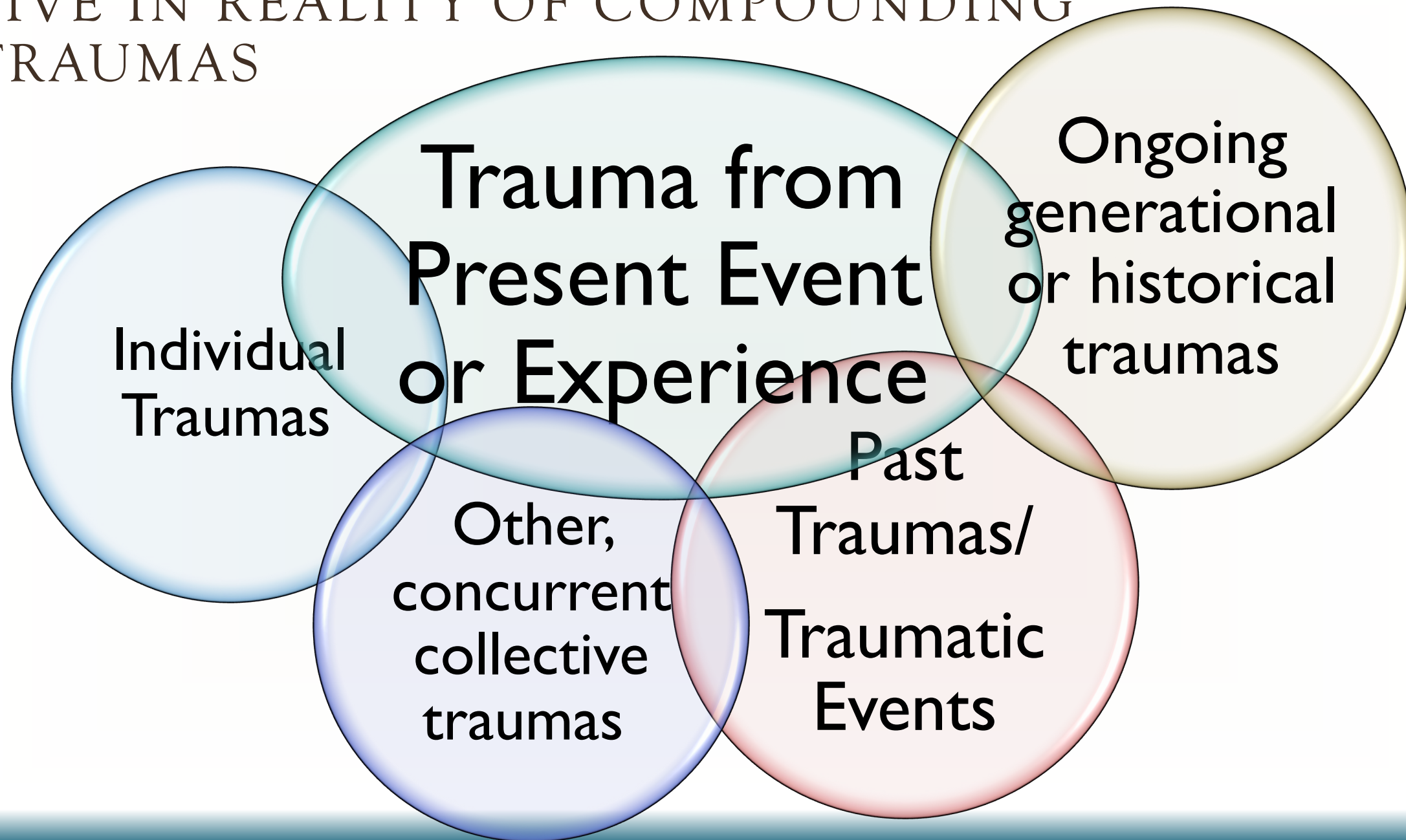


1. Trauma, by definition, lingers

2. Equates “Health” to the Absence or Elimination of Trauma (which is not possible)

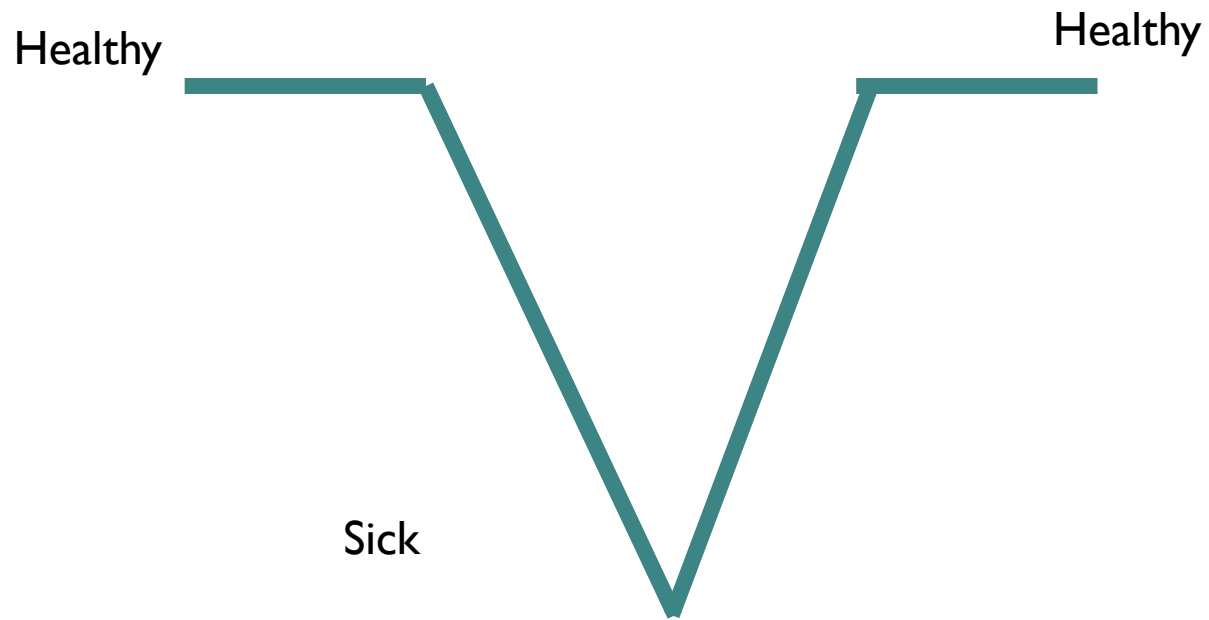


LIVE IN REALITY OF COMPOUNDING TRAUMAS



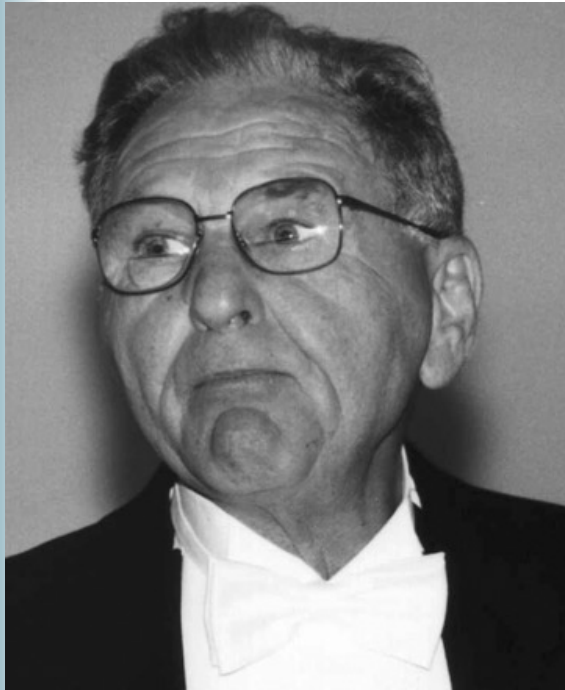
MANY OF US ARE STEEPED IN...

Restoration Narrative/American Jeremiad

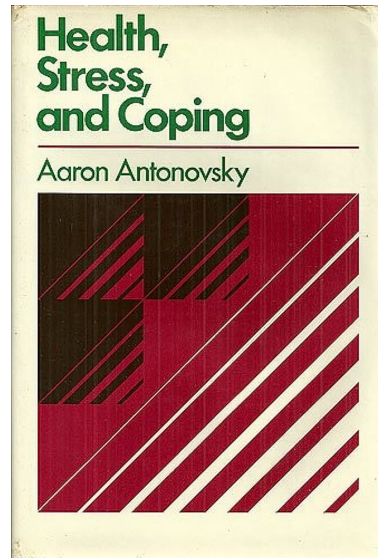
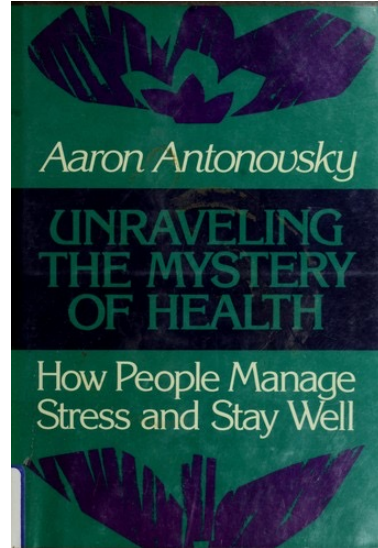


Pathogenic Model





Aaron Antonovsky
1923-1994

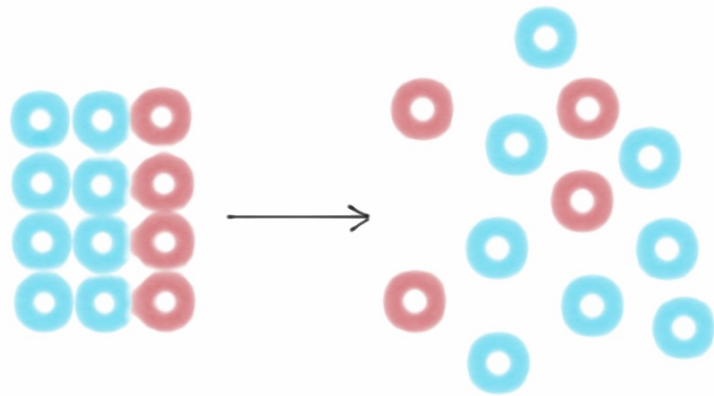


WHAT IF WE
REFRAMED
“HEALTH”?

THE GIFT OF
SALUTOGENESIS

TWO BASIC ASSUMPTIONS OF SALUTOGENESIS

#1: The world is innately entropic (chaotic) and moves towards entropy



#2: People have and can gain resources to survive/flourish amid chaos, conflict, or entropic forces



ANTONOVSKY'S QUESTION SHIFT

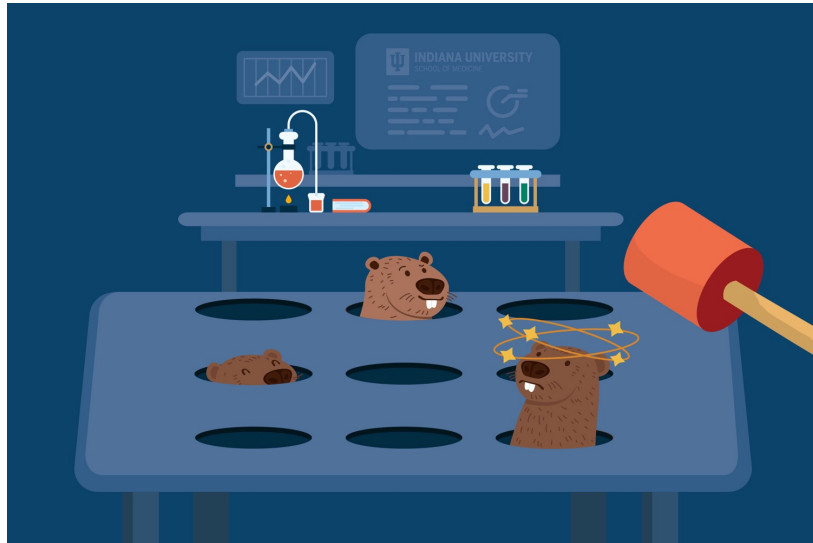
What makes people sick?



What contributes to health?



THE GIFT OF A NEW ORIENTATION



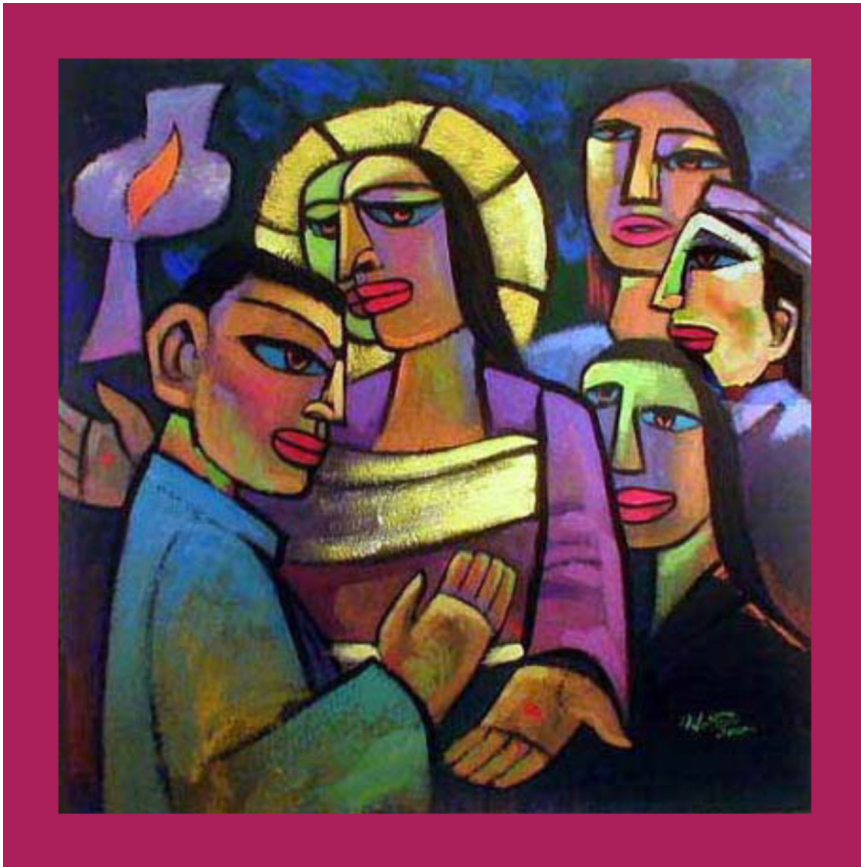
- Helps us to reframe understanding of health as NOT ONLY that which eliminates pain, struggle, chaos, or illness

- INSTEAD, we are encouraged to think about those forces and resources that support health AMID chaos, entropy, and brokenness



HEALTH IN A THEOLOGICAL KEY

©KIMBERLY WAGNER, 2024



"The Doubt of St. Thomas" by He Qi



"The Woman with the Alabaster Jar" by Melani Pyke

Requiring Flawlessness

vs.

Pursuing Flourishing



Pursuing
Flourishing
Requires
Holy or
Eschatological
Imagination



CULTIVATING AUTHENTIC HOLY OR ESCHATOLOGICAL IMAGINATION

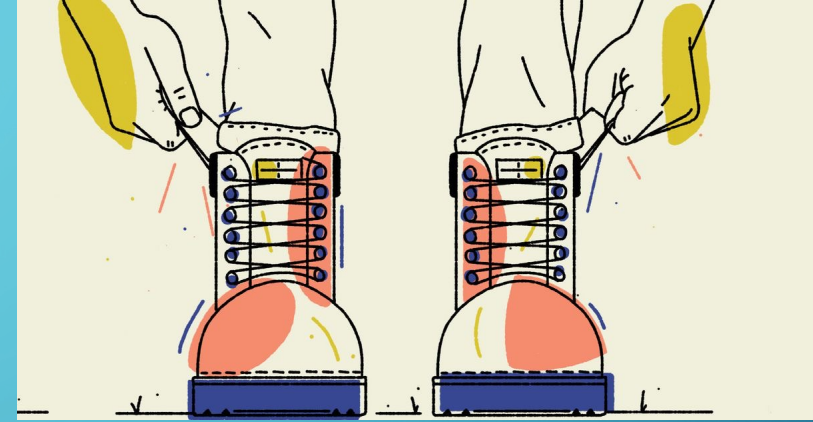
NOT RESULTS OF
OWN
ACCOMPLISHMENTS



INCLINATION TOWARDS A “REALIZED ESCHATOLOGY”



Narrative of Progress



“Pull Yourself Up by Your Bootstraps” Theology



Protestant Work Ethic

CULTIVATING AUTHENTIC HOLY OR ESCHATOLOGICAL IMAGINATION

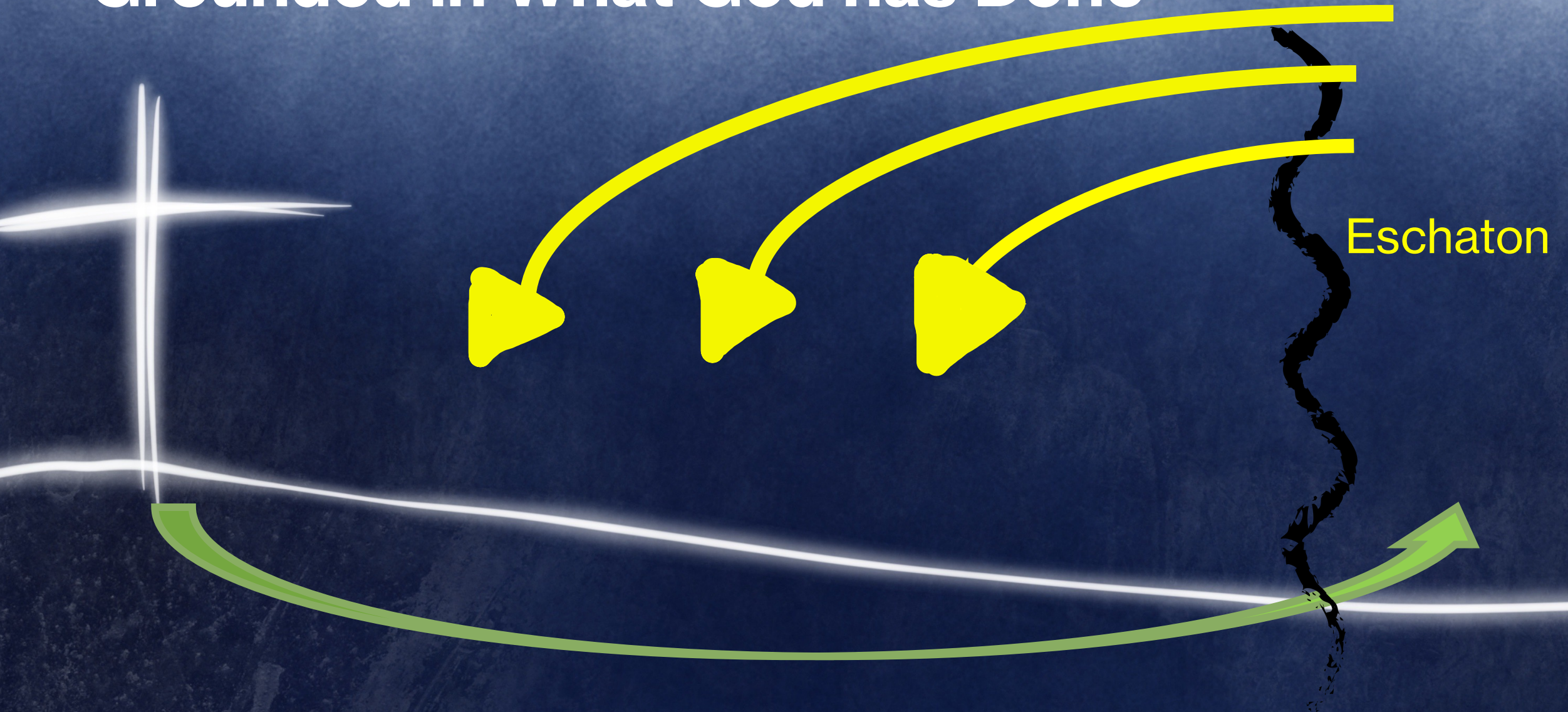
NOT
ESCAPISM/FANTASY



NOT IMAGE OF
RESULTS OF OWN
ACCOMPLISHMENTS



Imagination For What God will Do Grounded in What God has Done



CULTIVATING AUTHENTIC HOLY OR ESCHATOLOGICAL IMAGINATION

NOT
ESCAPISM/FANTASY



NOT IMAGE OF
RESULTS OF OWN
ACCOMPLISHMENTS



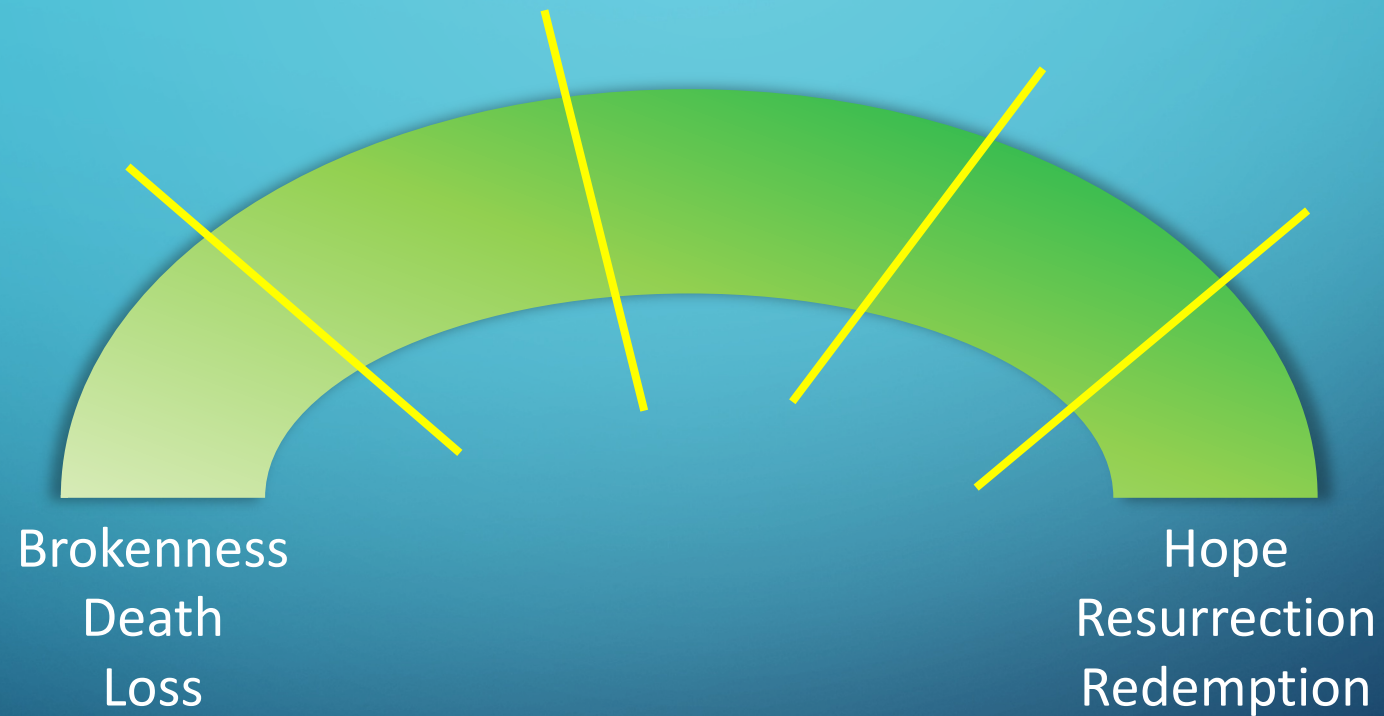
NOT IGNORANT OF
PRESENT PAIN,
GRIEF, HURT, OR
TRAUMA



ESCHATOLOGICAL IMAGINATION LIVES IN THE TENSION



RESISTS COLLAPSING THE TENSION



ESCHATOLOGICAL IMAGINATION: Wheat Among the Weeds

